

COSTA DULCE

NICARAGUA

Costa Rica to Nicaragua Border-Crossing Guide

Pre-Flight Guidelines

Before heading to Costa Dulce, make sure to take the following preparatory steps:

- Download your proof of Onward Travel, either your return flight ticket or proof of transit to Nicaragua. When passing Customs at the airport you can tell them you are "en transito" and show these items as proof.
- Download this Border Crossing Guide on your phone so you can pull it up if you are without data (you likely will be without data or wifi at the border).
- Download a copy/screenshot of your reservation. They may ask to see it at the border.
- Have at least \$14 to \$35 in small bills (\$1's, \$5's, and \$10's) to cross the border, as change may not always be available when paying to cross the border. We've outlined both the mandatory and optional border crossing fees below, though these fees are subject to change so we advise you have some spare bills.
- If you have any questions, we recommend you join the Facebook Group Nicaragua Flight / Travel Info Group, and search for relevant keywords.

BORDER CROSSING GUIDE

END HERE

Stop #3: Checkpoint

Have your passport ready to show to the officers here.

*TIP: As you walk across, you will see guys with handcarts that will offer to help you with your bags - these guys can be helpful in getting you through the customs office as well. If you're overwhelmed or want help with your bags, it's well worth tipping them **\$5-\$10** for the help they provide.*

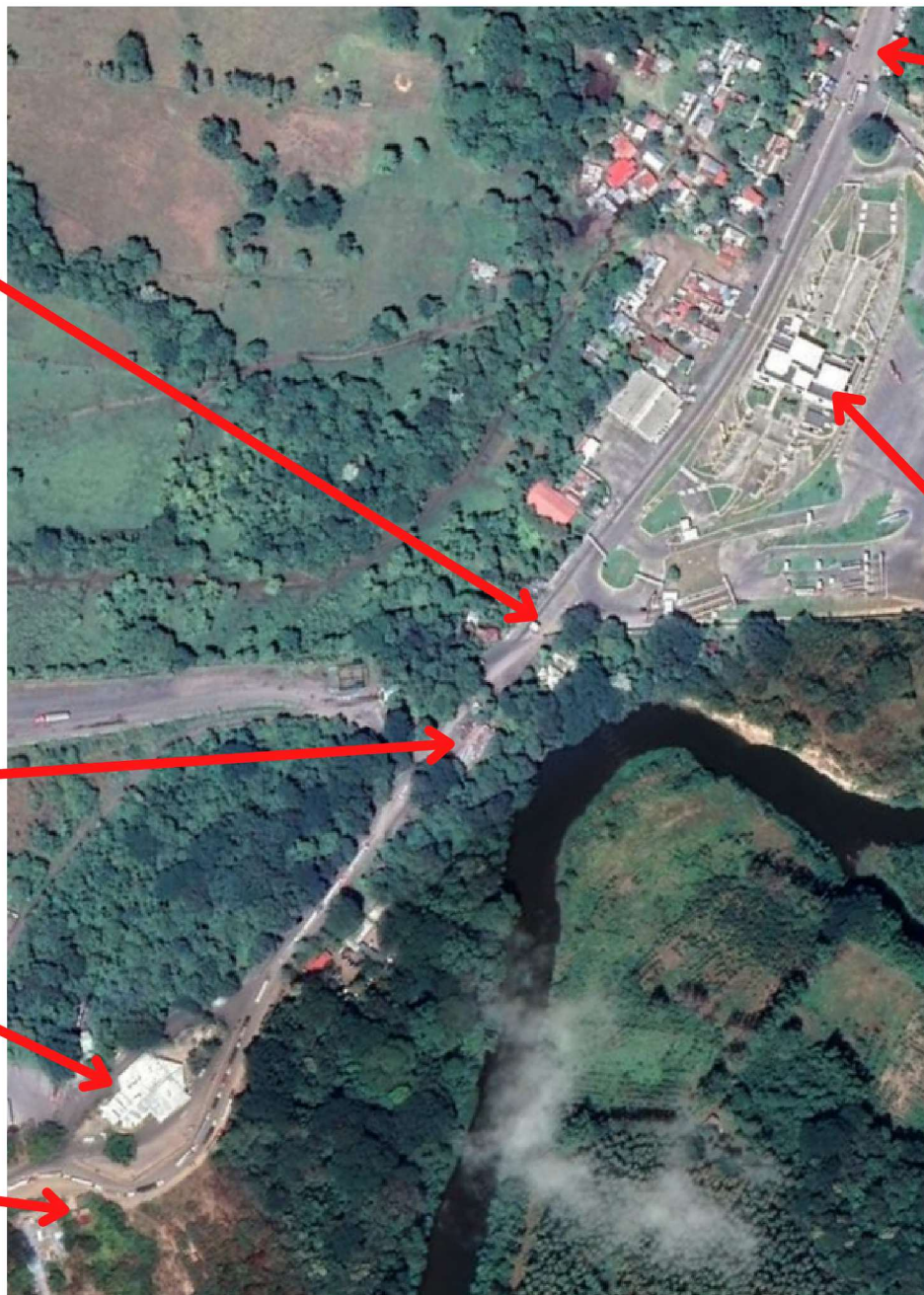
Stop #2: The Border Drop Off

This is where your Costa Rican driver will drop you off, this is as far as he can go. You'll walk about 100 yards from here to the Nicaraguan Customs Office.

First Stop: Costa Rica Customs

The Costa Rican driver will stop here and direct you to the office, you will meet the same driver again once exiting the office.

*If in Costa Rica longer than 12 hours there is a **\$10 exit fee**.*



Last Stop: Parking Lot

If you don't see your driver when you exit the customs office, walk to the parking lot at the end of the wall to your left and enjoy the drive to Costa Dulce.

Stop #4: Nicaragua Customs

You're almost done!

You'll pay the **\$1** tax as you enter the building and then go to the counter to pay your **\$13 entry fees** and get your passport stamp. Make sure to have change, they will not always be able to provide change to you. Lastly you'll get your bags scanned before exiting the building.

TIP: Our Nicaraguan driver may be able to meet you in front of the customs office but not always.

Customs officer will sometimes ask for the hotel information:

Hospedaje Costa Dulce
Km 14 carretera Ostional,
San Juan del sur
Propietaria: Patricia Jimenez
Contacto: 8277-8009

START HERE



COSTA DULCE
Nourish Your Nature